

## DRILLING & RIG ITEMS



## **CATALOG**

### **TABLE OF CONTENTS**

ADAPTER SPOOLS.....	3
BLOW OUT PREVENTERS(BOP).....	4
CASING DRIFT.....	5
CASING SCRAPER.....	6
CASING ELEVATORS – SIDE DOOR.....	7
CIRCULATING SUB.....	8
COUPLING.....	9
CROSSOVER SUB.....	10
DITCH MAGNET.....	11
DRILL COLLAR.....	12
DRILL COLLAR SLIPS.....	13-15
DRILL PIPE.....	16-18
DRILL PIPE SLIPS.....	19-20
DRILL PIPE PUP JOINT.....	21
DRILLABLE LIFTING SUB.....	22
DRILLING SPOOL.....	23
DRILL PIPE – CENTER LATCH ELEVATOR.....	24
DRILL PIPE SCREENS.....	25
DRIVE SUB.....	26
DOUBLE STUDDED ADAPTER.....	27
ELEVATOR LINKS.....	28
FLOAT VALVE.....	29-30
HEAVY WEIGHT DRILL PIPE.....	31-32
INSIDE BLOWOUT PREVENTOR.....	33
IMPRESSION BLOCK.....	34
JUNK MILL.....	35
JUNK SUB.....	36
KELLY BUSHING.....	37
KELLY SAVER SUB.....	38
KELLY VALVE.....	39
KELLY VALVE (UPPER).....	40
LIFT NUBBIN.....	41
LIFT PLUG.....	42
LIFTING SUB.....	43
LYT- SLIP TYPE ELEVATOR.....	44
MYT – SLIP TYPE ELEVATOR.....	45
RISER SPOOLS.....	46
ROTARY SHOE.....	47
SAFETY CLAMP.....	48
SHORT BOWL MANUAL SPIDER .....	49
SIDE ENTRY SUB.....	50
SIDE ENTRY SUB (INTEGRAL).....	51
SPACER SPOOL.....	52
STABBING GUIDE.....	53
STABILIZER.....	54
SUCKER ROD ELEVATOR.....	55
TIW TYPE SAFETY VALVE.....	56
TS100 MANUAL SPIDER.....	57
TUBING PUP JOINTS.....	58
TUBING TA CENTER LATCH ELEVATOR.....	59
WASHPIPE.....	60
YC SLIP TYPE ELEVATOR.....	61
YT SLIP TYPE ELEVATOR.....	62

## Adapter Spools

The Adapter Spool is provided in every size and pressure rating. INT'L supplies Adapter Spools with minimum length to provide adequate working space. All Adapter Spools are manufactured per API 6A specs from 4130 H2S 75K material.

**When ordering, please specify:**

- Size for Top
- Size for Bottom
- Length or height
- Studded or flanged ends
- Stainless steel ring grooves



**Flanged Adapter Spools**



COMPLETE SOLUTIONS

ALBDR ALMASY ALALMYT LLC, MUSCAT TEL:24667680

## BOP (BLOW OUT PREVENTERS)

The BOP is provided in every size and pressure rating. Blow Out Preventers are developed to cope with extreme erratic pressures and uncontrolled flow (formation kick) emanating from a well reservoir during drilling.





COMPLETE SOLUTIONS

ALBDR ALMASY ALALMYT LLC, MUSCAT TEL:24667680

## Casing Drifts

Drift: Used in casing, tubing and drill pipe to detect ID reduction.

**When ordering, please specify:**

- OD of Casing
- ID of Casing or Casing weight.





## Casing Scraper

The Casing Scraper is designed to remove scale, mud cake, cement sheath, embedded bullets, and other foreign material from inside of the casing wall. The casing scraper is manufactured from 4140 or 4145 alloy steel.

**When ordering, please specify:**

- OD of Casing
- ID of Casing or Casing weight
- Size and type of connections
- Spare parts



## Casing Elevators Side Door

Casing Elevators: Used for handling collar type casing. Equipped with a safety latch lock.

**When ordering, please specify:**

- OD of tubular (Pipe)
- Type of tubular (drill pipe; casing; tubing)
- Plain or upset
- Ton size needed (150; 250 ton; etc.)

Pipe	Tubing(Upset/Non Upset)			
Model	SLX	SLX	SLX	SLX
Max Load(Tons)	150	250	350	500
API Range	4-1/2"	5-5/8"	5-5/8"	5-5/8"
	To	To	To	To
	36"	36"	20"	20"



## Circulating Sub

Circulating subs are manufactured from AISI 4140/4145 alloy steel. The circulating sub is manufactured with one pin up connection to match the drill pipe by a 2" 1502 union.

**When ordering, please specify:**

- Overall length; 15" standard
- Sub OD
- Sub Bore
- Connection size (ex. 3-1/2" API IF, NC-38)





## Couplings

Couplings are used to connect two joints of pipe together. These are short lengths of heavy wall pipe with identical box threads at each end. These couplings mate with the pin ends of the joint of pipe it is connected to Couplings can also be used to crossover different sizes of tubing (ex. 2-3/8" EUE pin up x 2-7/8" EUE box down)

**Features and Benefits:**

- These Couplings are available in all carbon and exotic grades of steel including stainless and high alloy, and are available as specified in API or to the thread manufacturer's specs.
- Couplings can be supplied with special clearance OD's and beveled should



## Crossover Sub

Crossover Sub is used to crossover from one connection size to another or as the disposable component used to extend the connection life of a more expensive drill stem member. Crossover subs are available with box x pin, box x box or pin x pin connections. Crossover Subs are manufactured from 4145M or 4140HT alloy steel. The connections are protected by a phosphate surface coating that minimizes galling on initial make-up.

**When ordering, please specify:**

- Identify sub use. Example: Kelly Sub, crossover drill pipe to drill collar, drill collar to drill collar, bit sub, etc
- Overall length
- Largest diameter
- Bore ID
- Size and type of upper and lower connections, indicating pin or box
- Cast or pressed-steel thread protectors
- For Reduced Section Subs, add: diameter of reduced section
- Length of reduced section: 8", 12", 18" or 24"
- For Bit Subs, add: float bore size and type if desired



Bit Sub: Box x Box



Type B Reduced Section Sub (bottleneck)



Type C Saver Sub: Pin x Pin



Type A Straight OD Sub

## Ditch Magnet

Ditch Magnet is a junk retrieval tool designed to remove metal particles from drilling mud. High quality stainless steel is used to encapsulate a series of extra strength magnet elements assuring maximum pick-up capacity. The Ditch Magnet comes in 24" and 36" lengths complete with removable handles and a safety wiper system.

The Round ditch magnet comes in 24" and 36" lengths complete with lifting eyes. Magnet keepers can be provided for air shipments

**When ordering, please specify:**

- Overall length; 24" or 36"
- Magnet keepers



Hold'Em Square Magnet



## Drill Collar

Drill Collars are manufactured from 4145H MOD Q&T steel with a hardness range of 285-341 BHN. All API connections comply with dimensional requirements specified in API Spec. 7-1 and guidelines presented in API RP7G-2. All connections are phosphate coated to improve resistance to galling as well as “cold rolled” to provide longer fatigue life. API stress relief groove pin and bore back box are available upon request. R9 Drill Collars are offered as slick or spiral and can include optional features; slip and/or elevator recesses (to improve handling time) and hard banding.

### **When ordering, please specify:**

- Drill collar OD
- Drill collar bore ID
- Length of drill collar
- Slick or Spiral
- Size and Type of Connections, example: NC 50 box up x NC 50 pin down
- Cast or pressed steel thread protectors
- Slip and/ or Elevator Recesses
- Hard banding





## Drill Collar Slips

Drill Collar Slips come in three kinds of models: DCS -S, DCS-R and DCS-L. They can accommodate drill collar from 3" to 14" (76.2mm – 355.6 mm) OD.





## Drill Collar Slips

### DCS-Multi-Segment-Drill Collar Slips

Slip Type	DCS-S			DCS-R		DCS-L				
Drill Collar OD(Inch)	3_4	4-4 7/8	4 1/2- 6	5 1/2- 7	6 3/4-8 1/4	8-9 1/2	8 1/2- 10	9 1/4-11 1/4	11-12 3/4	12_14
P/N Slip C/W Circular Bullons	2572	2573	2552	2550	2503	2507	2530	2508	2534	2536
Weight complete set Lb(KG)	112 (51)	103 (47)	120 (54)	112 (51)	154(70)	173 (78)	185 (84)	198(90)	213 (86)	207 (94)
Total number of segments	7	7	9	9	10	12	13	14	17	17
Total no: of Intermediate segments	5	5	7	7	9	10	11	12	15	15
Total no of hinge pins	6	6	8	8	10	11	12	13	16	16
Use in insert Bowl Number	API Or		No:3		No:3			No:2	No:1	

### DCS-Multi-Segment-Drill Collar Slips

Slip Type	DCS-S			DCS-R			DCS-L		
Description	P/N	Lb	kg	P/N	lb	kg	P/N	lb	kg
Segment Right End	2568	11	5	2554	10	45	2510	12	5.5
Segment Left End	2569	11	5	2555	10	45	2511	12	5.5
Segment Intermediate		11	5	2556	10	45	2512	12	5.5
Hinge Pin W/cotter Pin	2525	-	-	2525	-	-	2520	0.7	0.3
Hinge Pin W/washer&Cotter Pin	3769	0.5	0.2	3769	0.5	0.2	3769	0.5	0.2
Handle for right & left segment	3765	3.5	1.5	3765	3.5	1.5	3765	3.5	1.5
Handle for intermediate segments	3766	4	2	3766	4	2	3766	4	2
Retaining Cotter Pin	71936	-	-	-	-	-	71936	-	-
Retaining screw W/lock washer	-	-	-	3748	3748	-	-	-	-

DCS-Multi-Segment-Drill Collar Slips

Slip Set	Drill Collar OD (In)	P/N	Weight		Qty
			lb	kg	
DCS-S	3_4	2628-49	13	6	49
	4-4 7/8	2620-49	8	3.5	49
DCS-R	4 1/2-6	2628-63	16	7	63
	5 1/2-7	2620-63	11	5	63
DCS-L	6 3/4-8 ¼	2630-88	15	7	88
	8-9 ½	2630-96	16	7	96
	8 1/2-10	2627-104	26	12	104
	9 1/4-11 ¼	2630-112	19	8.5	112
	11-12 ¼	2625-136	13	6	136
	12_14	2630-136	16	7	136

## Drill Pipe

### Tubes

When green tubes enter the facility they are inspected for any defects to ensure quality. All tool joints are manufactured using state of the art CNC machines, guaranteeing accuracy and quality. Factory thoroughly inspects all bars and forgings from which tool joints will be manufactured. Tool joints are produced using 4137M material and heat treated to industry standards before threading. All threading is done in accordance with industry standards spec 7-1. Hard banding is available upon customer request. Drill Pipe International has the capacity to meet the needs of any customer.

### Upsetting

Once green tubes enter the facility they are upset in accordance with customer specifications. Factory offers an external upset (EU), internal upset (IU), and an internal-external upset (IEU). Our group 1 and 3 upsets utilize a geometry which minimizes stress concentration. Tool joint assembly is designed to improve the transition from the cross section of the pipe to the tool joint weld neck. Our internal (IU) and internal-external (IEU) upsets are designed to have a longer internal upset taper (miu) than the industry standards 5DP requirements. After upsetting, QC supervisors inspect the pipe to guarantee upset dimensions and quality.

### Heat Treating

By maintaining its own heat treating furnace, Factory controls all areas within the manufacturing process. Factory offers all industry standard 5DP grades and also offers pipe suitable for sour services. All heat treatment is done in accordance with 5DP specifications. All mechanical testing is done to industry standard 5DP requirements.

### Inertia Welding

Tool joints and drill pipe are bonded utilizing inertia welding. These machines guarantee the most consistent and reliable weld available. All inner and outer weld rings are removed from the pipe, and then the weld zone of the drill pipe is quenched and tempered to achieve its proper physicals as required by industry standard Spec 7-1 SR1. After the welding process is complete, each piece of drill pipe is examined in a wet magnetic particle testing unit and ultrasonic tested by independent third party level 2 inspectors. Welds are also inspected for correct hardness (less than 37 H.R.C) and thickness. At this stage one last quality check is utilized to verify any visual defects. Once drill pipe passes these tests it is stamped to industry standard requirements and ready for finishing.

## Non-Destructive Testing

Full length tubes are inspected using ultrasonic inspection, while the upset ends are tested with a wet magnetic particle inspection. This inspection is carried out after the upsets are machined to the required dimensions. These tests guarantee that the drill pipe is free from defects.

## Finishing

Drill pipe is finished to customer specifications. Before external coating, zinc based thread compound is applied to all drill pipe threads. After the zinc compound is applied each drill pipe is fitted with standard thread protectors. Upon request drill pipe can be internally plastic coated. Once coated, drill pipe is ready for shipment.

When ordering, please specify:

- Drill pipe OD
- Nominal Weight
- Pipe Grade
- Range
- Connection Type
- Tool Joint OD
- Tool Joint ID





Pin End



Box End



## Drill Pipe Slips

Drill Pipe Slips: SDS, SDML, and SDXL Rotary Slips are for use in API standard insert bowls. Featuring better contact and distribution of load on drill pipe thru a superior wraparound configuration and unique insert design, these slips prevent bottlenecking and gouging damage. The buttress design of the body segments provides great strength while minimizing weight for ease of handling.



## Drill Collar Slips

### SDS-Short Rotary Slips

Slip Body Size	3.5"			4.5"		
API Pipe Size (OD Inch)	2 3/8	2 7/8	3 1/2	3 1/2	4	4 1/2
Parts Number Slips C/W Inserts						
Weight slips C/W inserts lb (kg)	117(53)	111(50)	107(48.5)	143(65)	136(62)	127(58)
Qty Of inserts	24	24	24	36	36	36
Weight of inserts lb (kg)	21(9.5)	16(7)	10(4.5)	32(14.5)	25(11)	16(7)

### SDML-Medium Rotary Slips

Slip Body Size	3.5"			4.5"			3.5"			4.5"		
API Pipe Size (OD Inch)	2 3/8	2 7/8	3 1/2	3 1/2	4	4 1/2	4	4 1/2	5	4 1/2	5	5 1/2
Parts Number Slips C/W Inserts												
Weight slips C/W inserts lb (kg)	193(87.5)	188(85)	180(81.5)	207(94)	199(90)	188(81.5)	204(92.5)	196(89)	185(84)	200(91)	185(84)	181(82)
Qty Of inserts	30	30	30	45	45	45	45	45	45	45	45	45
Weight of inserts lb (kg)	26(12)	22(9.5)	13(6)	39(17.5)	31(14)	20(9)	39(17.5)	31(14)	20(9)	39(17.5)	31(14)	20(9)

### SDXL-Extra Long Rotary Slips SDXL&SDL Inserts

Slip Body Size	4 1/2"			5"			5 1/2"		
API Pipe Size (OD Inch)	3 1/2	4	4 1/2	4	4 1/2	5	4 1/2	5	5 1/2
Parts Number Slips C/W Inserts									
Weight slips C/W inserts lb (kg)	229(104)	219(99)	205(93)	237(105)	227(103)	213(96.5)	234(106)	224(101.5)	210(95)
Qty Of inserts	54	54	54	54	54	54	54	54	54
Weight of inserts lb (kg)	47(21)	37(17)	23(10.5)	47(21)	37(17)	23(10.5)	47(21)	37(17)	23(10.5)

## Drill Pipe Pup Joints

Drill Pipe Pup Joints are machined from integral bars of 4145H MOD Q&T (chromium molybdenum, manganese modification) alloy steel quenched and tempered to a hardness range of 285- 341 BHN (drillcollar specs)

Pup joints are available in 5 feet, 10 feet, 15 feet and 20 feet lengths and can be ordered to match standard drill pipe dimensions.

**\*Welded pup joints are also available on request**

When ordering, please specify:

- Overall length; 5 ft., 10 ft., 15 ft., 20 ft. or specific customer sizes
- Drill pipe OD
- Tool Joint OD
- Tapered or square shoulder
- Drill pipe connection size & type
- Bore
- Pressed or cast steel thread protectors



Integral Pup Joints



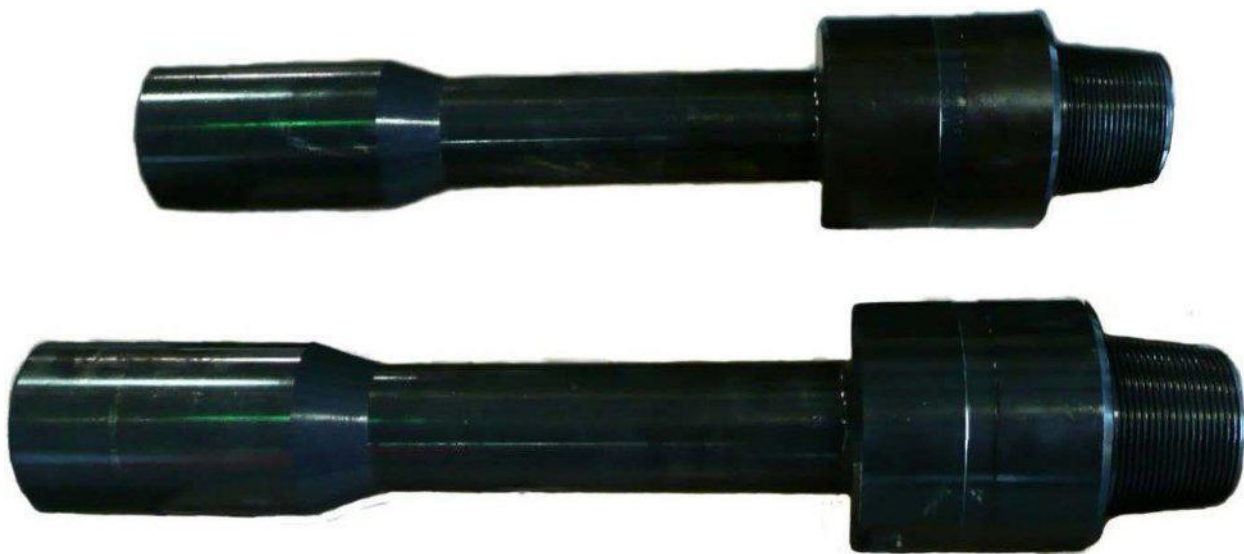
Welded Pup Joints

## Drillable Lifting Sub

Drillable Lifting Subs are of one-piece construction and manufactured from 4145M or 4140HT alloy steel. The Drillable Lifting Sub comes with an 18degree tapered shoulder with a box up x pin down connection; and is available in all diameters and lengths.

When ordering, please specify

- Drill collar OD
- Tool Joint OD
- Drill pipe OD
- Bottom connection (pin end)
- Top connection (box end)
- Bore
- Pressed or cast steel thread protectors



## Drilling Spools

Drilling Spool is provided in every size and pressure rating. Drilling Spools normally have the same size and pressure rating ends and the same size outlets. ROOT NINE INT'L supplies Drilling Spools with minimum length to provide adequate working space. All Drilling Spools are manufactured per API 6A specs from 4130 H2S 75K material.

**When ordering, please specify:**



- Size for Top
- Size of side outlets
- Length or height
- Studded or flanged ends
- Studded or flanged outlets
- Stainless steel ring grooves



## Drill Pipe Elevator Centre Latch Elevators (18 degree)

R9 Drill Pipe Centre Latch Elevators: Used for handling drill pipe. Equipped with a safety double lock combination.

When ordering, please specify:

- OD of Drill Pipe
- Model

Ton size needed (100; 150; 250; 350)



Pipe	Drill Pipe 18 Degree			
Model	MG	RG	MGG	GG
Max Load(Tons)	100	150	250	350
API Range	2-3/8	2-3/8	-	-
	2-7/8	2-7/8	-	-
	3-1/2	3-1/2	3-1/2	-
	4	-	4	4
	4-1/2	-	4-1/2	4-1/2
	-	-	5	5
	-	-	5-1/2	5-1/2

## Drill Pipe Screens (surface)

Drill Pipe Screens are the first line of defence in ensuring the drilling fluids integrity. These simple but effective filters are positioned within the top stand of drill pipe. They never go below the rig floor – this allows for easy and often cleanout. Three filter sizes and a large array of connection flanges ensures that there is a INT'L filter available to fit your needs. INT'L screens are made from stainless steel which provides strength and resists corrosion. INT'L screens are easily field serviceable and are wire line retrievable if sent down hole.

**When ordering, please specify:**

- Drill Pipe connection



## Drive Sub

The Drive Sub is the crossover between the drill string and the wash over string. The drive sub is manufactured with a pin down matching the wash over string x a box up matching the drill string. All drive subs are manufactured from 4140 HT or 4145M alloy steel. All FJWP and premium threads can be provided for the drive subs.

**When ordering, please specify.**

- Wash pipe OD and weight
- Pin Connection (FJWP or premium connection)
- Box Connection (API connection)
- Overall length





COMPLETE SOLUTIONS

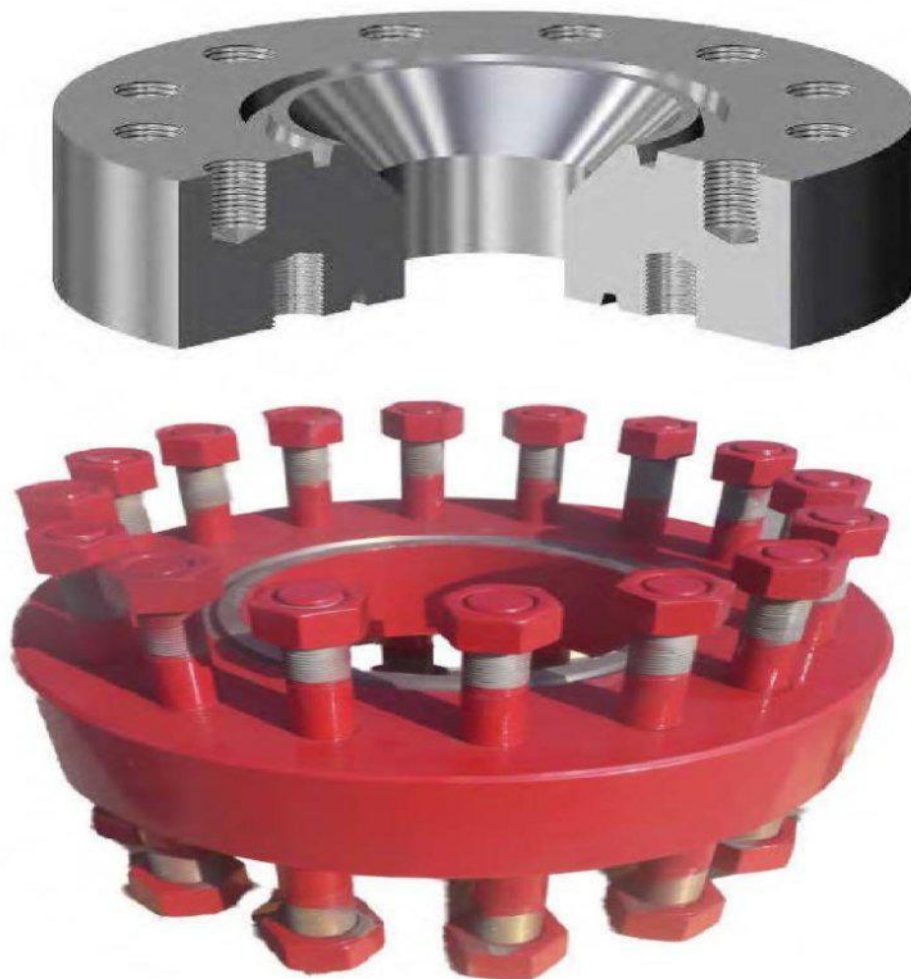
ALBDR ALMASY ALALMYT LLC, MUSCAT TEL:24667680

## Double Studded Adapter (DSA)

The DSA is provided in every size and pressure rating. DSA's are manufactured per API 6A specs from 4130 H2S 75K material.

**When ordering, please specify:**

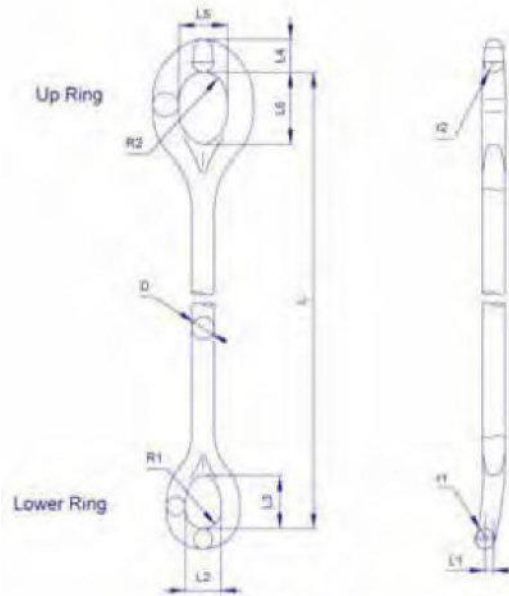
- Size for Top
- Size for Bottom
- Stainless steel ring grooves



Double Studded Adapter (DSA)

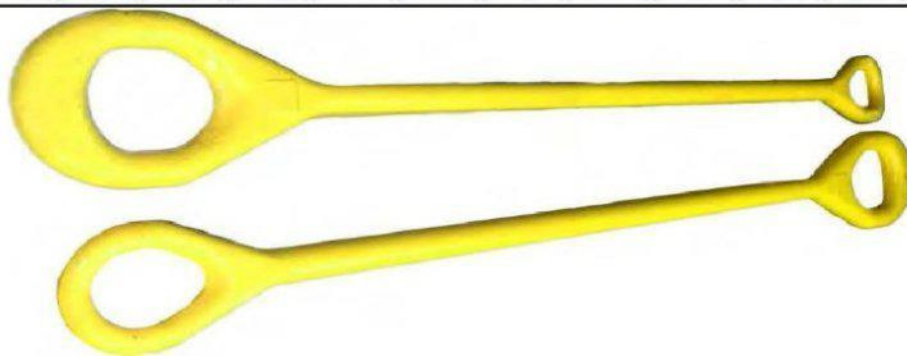


## Elevator Links (Bails)



- Meet API 8C and SY/T5035 standards
- Take advantage of high-quality alloy steel and swaging process
- Designed safety factor between 2.25 and 3
- Working load limit between 75 and 500 US tons.
- Both ends shaped by swaging process, poles pulled by open forging process
- Heat treated
- Each link inspected by non-destructive examination (NDE)
- Each link tested with 150% work load before delivery
- Signs indicating WORKING LOAD LIMIT shown on links
- Painted Surface
- Ideal for drilling operation of deep wells
- Use in pairs

	mm	mm	mm	mm	mm	mm	mm	mm	mm	mm	mm	mm	kg /ft
Art.No	D	r1	R1	L1	L2	L3	r2	R2	L4	L5	L6	L	Weight
DH75	53	21	53	20	106	150	29	80	70	140	203	1500	90
DH150	68	24	51	25	102	150	29	64	95	140	210	1800	165
DH250	78	31	70	30	140	200	35	102	135	203	250	2700	346
DH350	89	37	70	35	140	203	35	102	135	203	254	3300	462
DH500	115	48	83	50	170	250	48	121	160	242	300	3600	890





## Float Valves

The Type F plunger type valve offers positive and instant shut-off. In normal drilling operations the model F offers economy and durability. The piston type stops flow-back when making connections and keeps cuttings out of the drill string. The flapper valve style allows full flow through valve, designed for highly abrasive fluids.

**When ordering, please specify:**

- Type F or G
- Float Valve Size or connection size

Plunger Type(Type F)



Flapper Type(Type G)



## Float Valves

Tool Joint Types	Sizes									
	1R	1F-2R	2F-3R	3F	3-1/2 1F	4R	4F	5R	5F-6R	6F
API Regular	2-3/8	2-7/8	3-1/2			4-1/2		5-1/2	6-5/8/7-5/8	8-5/8
Hughes or Reed Regular	2-3/8	2-7/8	3-1/2			4-1/2		5-1/2	6-5/8	
Union Tool	2-3/8	2-7/8/3-1/2					4-1/2	5-1/2	6-5/8	
Hughes or Reed Double Streamline		2-7/8/2	3-1/2	4-1/2			5	5-1/2	6-5/8	
API Full Hole		2-3/8	2-7/8	3-1/2	4		4-1/2		5-1/2	6-5/8
Reed Acme Full HOle				3-1/2			4-1/2	5-1/2		
Hughes Xtra Hole			2-7/8	3-1/2			4-1/2	5		
Reed Semi-Internal Flush			2-7/8	3-1/2			4-1/2	5		
API Internal Flush		2-3/8	2-7/8		3-1/2		4	4-1/2		
Hydril Type IF(Int.flush ext upset)	2-7/8/3-1/2			4-1/2/5		5-1/2		6-5/8		
Hydril EIU(ext int upset)				3-1/2		4	4-1/2		5-1/2	6-5/8
Hydril Type F(External flush)	2-7/8/3-1/2			4-1/2/5		5-1/2		6-5/8		
Hughes Ext.Flush Acme Type		3-1/2	4-1/2			5-1/2		6-5/8		
Hughes Ext.Flush Full Hole Type				4-1/2						

## Heavy Weight Drill Pipe

HWDP are manufactured from 4145H MOD Q&T steel with a hardness range of 285-341 BHN. All API connections comply with dimensional requirements specified in API Spec. 7-1 and guidelines presented in API RP7G-2. All connections are phosphate-coated to improve resistance to galling as well as “cold rolled” to provide longer fatigue life. API stress relief groove pin and bore back box are available upon request. R9HWDP are offered as conventional or spiral.

### **When ordering, please specify:**

- HWDP OD
- HWDP bore ID
- Length if not standard (31 ft.)
- Conventional or Spiral
- Size and Type of Connections, example: NC 50 box up x NC 50 pin down
- Cast or pressed steel thread protectors
- Hard banding
- Internal Plastic Coating



**Conventional HWDP**

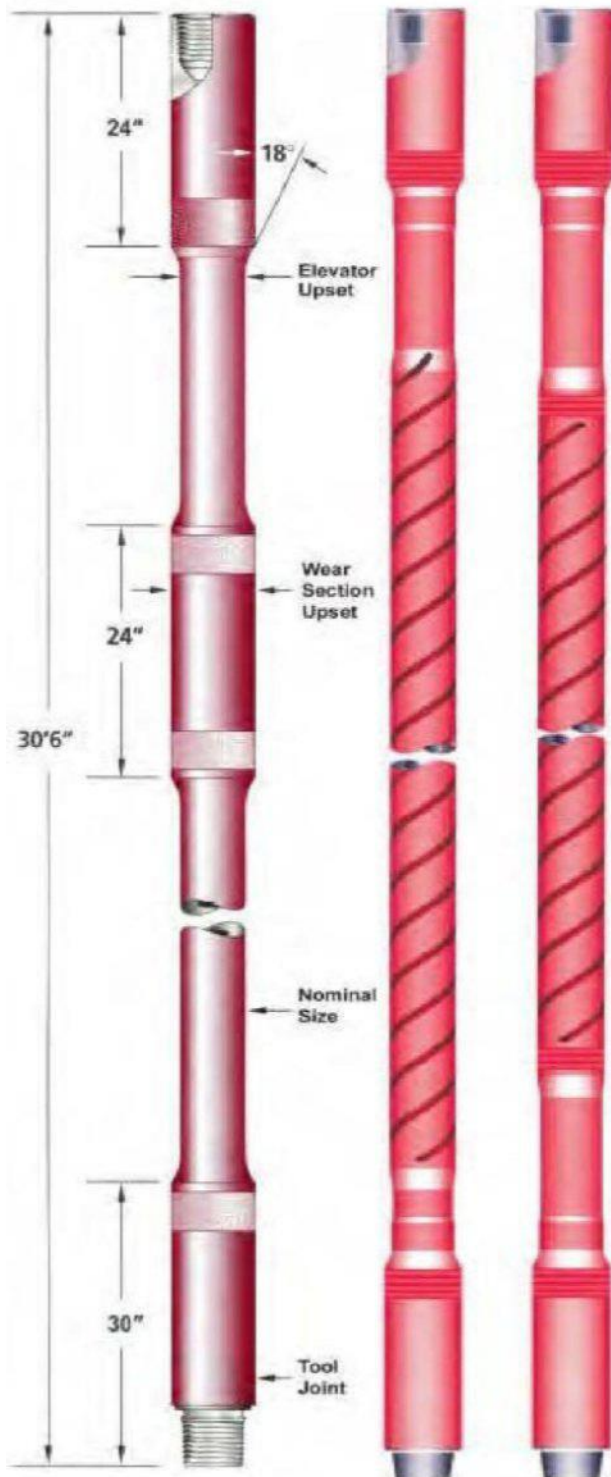


**Spiral Weight HWDP**



COMPLETE SOLUTIONS

ALBDR ALMASY ALALMYT LLC, MUSCAT TEL:24667680



## Inside Blow Out Preventer (IBOP)

The IBOP is a back pressure valve used in the drill string to prevent the well from flowing uncontrollably up the drill string. The IBOP is manufacture from AISI 4140/4145 alloy steel, and can be trimmed for standard or H2S.

**When ordering, please specify:**

- Tool OD
- Working Pressure: 5,000 / 10,000 / 15,000 PSI
- Tool connection size (ex. NC-38)
- Standard or H2S Trim
- Bore
- Pressed or cast steel thread protectors



**with Premium connections**



**with API connections**

## Impression Block

The Impression Block is an accessory tool used to accurately determine the dimensions and configuration of the upper end of a fish as well as to check its condition and position in the well bore. The soft lead lower end of the impression block captures an impression of the fish upon making contact. Impression blocks are manufactured with a pin or box up connection and a layer of soft lead on the lower end of the tool. Impression blocks are manufactured from 4140HT or 4145M material.

**When ordering, please specify:**

- Desired OD
- Box or pin up connection
- API connection size (ex. 3-1/2" API IF, NC-38)
- Overall length of tool







COMPLETE SOLUTIONS

ALBDR ALMASY ALALMYT LLC, MUSCAT TEL:24667680

## Junk Mill

Junk Mills make milling jobs easy even when cutting the toughest fish such as alloy-steel packers, squeeze tools, perforating guns, drill pipe, tool joints, reamers, reamer blades, and rock bits. Junk mills are available as concave, convex or flat bottoms in various combinations of fishing necks and stabilizers. Junk Mills are manufactured from 4140HT or 4145M material, and dressed in crushed, sintered tungsten carbide, or carbide inserts.

**When ordering, please specify.**

- OD
- Type: Flat, Concave, Bladed, Tapered, String
- Box or pin up connection.
- API connection size (ex. 3-1/2" API REG)
- Fishing neck length



## Junk Sub

The Junk Sub is an accessory tool used in milling or drilling operations. It is designed to prevent cuttings that are too heavy to be circulated from settling to the bottom of the hole. The standard junk sub is a welded assembly with a 10-inch-deep cup. Long and extra-long baskets are available; these provide a 20- or 30-inch-deep cup. Junk Subs are manufactured from 4140HT or 4145M alloy steel.

**When ordering, please specify.**

- Hole Size or Desired Cup OD
- API connection size (ex. 4-1/2" API REG pin up x 4-1/2" API REG box down)
- Length of cup: 10", 20" or 30"



## Kelly Bushing

**When ordering, please specify:**

- Rotary Kelly Size (ex. 5-1/4" Hex)
- Hex or Square Kelly
- Pin or Square Drive
- Heavy Duty or Medium Duty



**Square Drive**



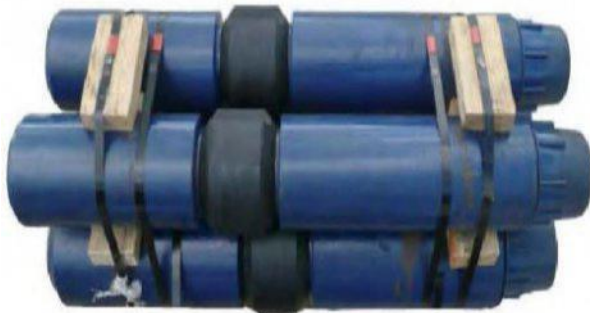
**Hex Drive**

## Kelly Saver Subs

Kelly Saver Sub is used to extend the life of the Kelly by taking the connection wear each time it is made up to a drill stem component. The saver sub connection is sacrificed because it can be easily repaired or inexpensively replaced. The saver sub can be equipped with a rubber or brass protector to reduce BOP equipment and casing wear resulting from contact damage with the lower Kelly connection. Kelly Saver Subs are manufactured from 4145M or 4140HT material grades.

**When ordering, please specify:**

- Overall length; 36", 42" or 48"
- Largest diameter
- Bore ID
- Size and type of upper and lower connections, indicating pin or box
- Cast or pressed-steel thread protectors
- For Kelly Saver Subs with protectors, add: casing OD and weight to properly size the casing protector.



**With Rubber Protector**



**Without Rubber Protector**



**With Brass Protector**



## Kelly Valves Lower

The Kelly Valve can be used as a drill pipe safety valve, Upper Kelly Valve, or Lower Kelly Valve. As an Upper Kelly, the valve can be used to control blowout pressures by shutting off flow in the drill string at any time. As a Lower Kelly, the valve can stop mud loss when the Kelly is disconnected from the drill string. Kelly Valves are manufactured from AIS.

4140/4145 alloy steel and can be trimmed to standard or H2S. The Kelly Valves can be provided as one- or two-piece construction.

### **When ordering, please specify:**

- Upper or Lower
- Tool OD

Working Pressure: 5,000 / 10,000 / 15,000 PSI

- One piece or two-piece construction
- Tool connection size (ex. NC-38)
- Standard or H2S Trim
- Bore
- Pressed or cast steel thread protectors.



## Kelly Valve (Upper)

The Upper Kelly Valve is manufactured with left-handed connections to be used between the Kelly and swivel. The valve can be used to control blowout pressures by shutting off flow in the drill string at any time. The Upper Kelly Valve can also be used as a lower Kelly valve. Kelly Valves are manufactured from AISI 4140/4145 alloy steel and can be trimmed to standard or H2S. The Kelly Valves can be provided as one- or two-piece construction.

**When ordering, please specify:**

- Upper or Lower
  - Tool OD
- Working Pressure: 5,000 / 10,000 / 15,000 PSI
- One piece or two-piece construction
  - Tool connection size (ex. 6-5/8" API REG)
  - Standard or H2S Trim
  - Bore
  - Pressed or cast steel thread protectors.



Upper Kelly Valve

Upper Kelly Valves



## Lift Nubbin

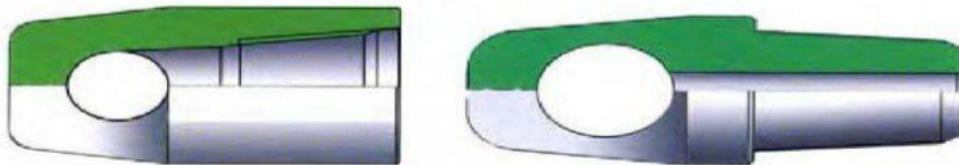
Lift Nubbins are used for lifting tools and tubular products during manufacturing, shipping or at the rig site. Lift nubbins are manufactured from steel castings with heavy-duty bails suitable for picking up and laying down all tools and tubular. All API connections are manufactured in accordance with API spec 7-1.

**When ordering, please specify:**

- Pin fit (fits over the API pin)



- Box fit (fits into the API Box)



- Integral Milled Type for premium connections from AISI41xx material.

## Washover Lifting Plug

Washover Lifting Plugs are of one-piece construction and manufactured from 4145M or 4140HT alloy steel. The Lifting Plug is used for lifting the wash over string and comes plain or with lifting bail.



Washpipe		Shoulder OD(Inch)		Weight(lbs)	
Size(inch)	Length(Inch)		FJWP Connection	Plain	with ball
	Plain	With Ball			
4 1/2	6	12	5	7	8
4 3/4	6	12 1/2	5 3/8	10	11
5	6	13	5 9/16	14	15
5 1/2	6	13 1/2	6 1/8	9	10
5 3/4	6	13 3/4	6 1/2	9	10
6	6	14	6 5/8	12	13
6 5/8	6	14 1/2	7 7/16	12	13
7	6	14 13/16	8	13	14
7 5/8	6	17	8 5/8	14	15
8 1/8	6	18	9 3/32	18	19
8 5/8	7	19	9 5/8	22	23
9	7	19 1/2	10	29	30
9 5/8	7	20	10 5/8	32	33
10 3/4	7	21	11 3/4	36	37
11 3/4	7	21	12 3/4	40	41
13 3/8	7	21	14 3/4	46	47

## Lifting Sub

Lifting Subs are of one-piece construction and manufactured from 4145M or 4140HT alloy steel. The Lifting Sub comes as tapered or square shoulder types and is available in all diameters and lengths.

**When ordering, please specify:**

- Drill collar OD
- Tool Joint OD
- Tapered, square shoulder or combination
- Drill pipe OD
- Drill collar connection size & type
- Bore
- Pressed or cast steel thread protectors.



Square Shoulder Lifting Sub



Type C Combo Shoulder Lifting Sub (with square shoulder and 18 degree taper)

## LYT Slip Type Elevators

The LYT (20) Ton Slip Type Elevator is used for holding and hoisting oilfield tubing. The LYT size range is 1-1/2" through 2-1/16".

Rated Capacity: 20 tons Range: 1-1/2" – 2-1/16"

**When ordering, please specify:**

- What size inserts to be dressed in slip body
- Extra insert sizes
- Spare parts



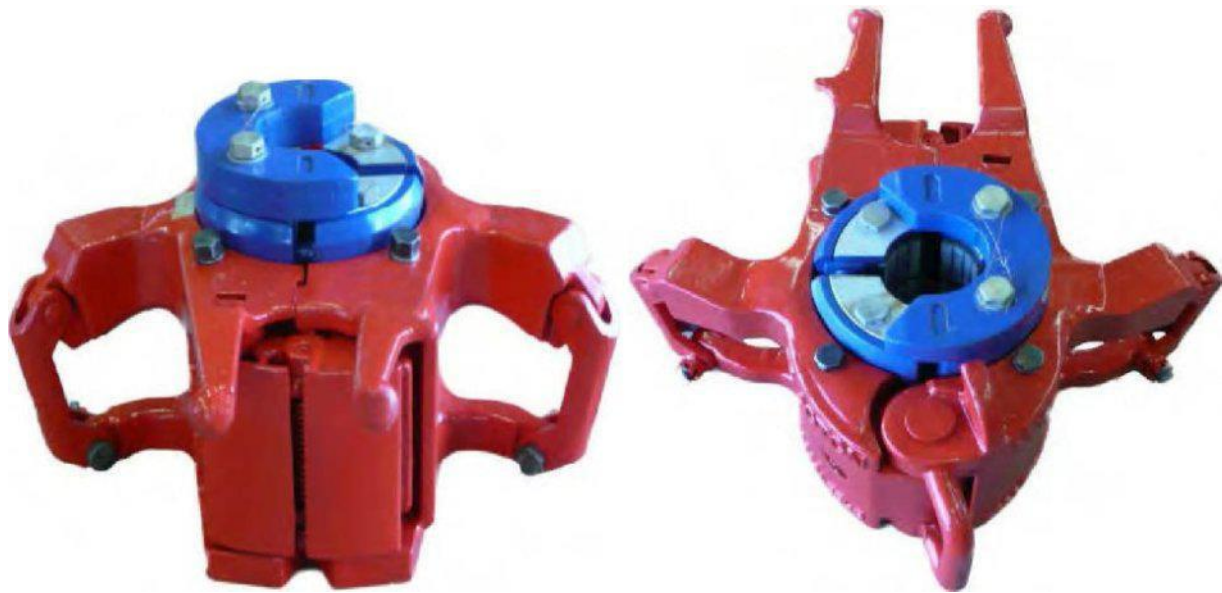
## MYT Slip Type Elevators

The MYT 40 Ton Slip Type Elevator is used for holding and hoisting oilfield tubing. The MYT size range is 1.315" through 2-7/8"

Rated Capacity: 40 tons

**When ordering, please specify:**

- What size inserts to be dressed in slip body
- Extra insert sizes
- Spare parts



## Riser Spool

The Riser Spool is provided in every size and pressure rating. Riser Spools normally have the same end connections; however, ROOT NINE INT'L can supply to customer specifications. Riser Spools are manufactured to customer desired length or can be provided with minimum length to provide adequate working space. Riser Spools are manufactured per API 6A specs from 4130 H2S 75K material.

**When ordering, please specify:**

- Size for Top
- Size for Bottom
- Length or height
- Studded or flanged ends
- Double Drilled
- Stainless steel ring grooves.





## Rotary Shoe

Rotary Shoes are manufactured from specialty heat treated alloy to provide the ultimate in toughness and durability. They are used to cut a clearance between the fish and the wall of the well bore. Each shoe is designed to fit a particular downhole need and is run on the bottom of the wash over string. Shoe design is dictated by whether it cuts on the bottom, on the O.D., on the I.D., or on any combination of these. When hole size permits, additional clearances can be cut by using side ribs to enable greater circulation.





COMPLETE SOLUTIONS

ALBDR ALMASY ALALMYT LLC, MUSCAT TEL:24667680

## Manual Spider “Short Style” (Bowl) (100 ton)

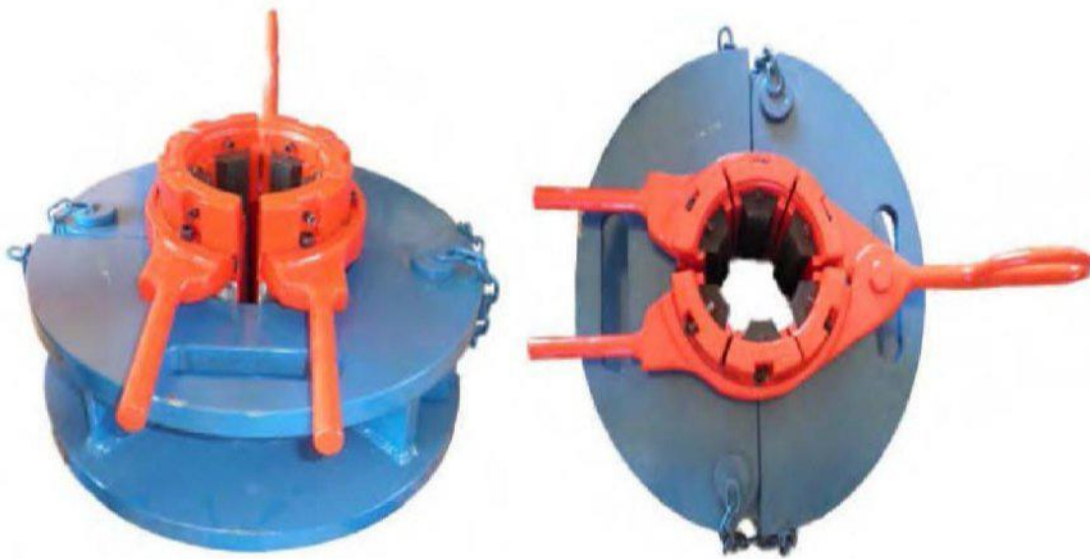
The Short Style Manual Spider (bowl) comes in one range: 5-1/2” bowl and is used with a DU slip assembly.

Rated Capacity: 100 tons

5-1/2” Bowl Range: 3-1/2” – 5-1/2”

**When ordering, please specify:**

- Insert Size for Slip Assembly
- Extra Insert Sizes
- Spare parts.



## Side Entry Subs (WELDED)

Side Entry subs are manufactured from AISI 4140/4145 alloy steel. The side entry sub is manufactured with box by pin connections to match the drill pipe by a welded 2" 1502 union side outlet.

**When ordering, please specify:**

- Overall length
- Sub OD
- Sub Bore
- Connection size



**With Premium Conn box x pin**



**With API box x pin**



**2" Fig. 1502 female**



COMPLETE SOLUTIONS

ALBDR ALMASY ALALMYT LLC, MUSCAT TEL:24667680

## Side Entry Subs (INTEGRAL)

Integral Side Entry subs are manufactured from 1 piece of AISI 4140/4145 alloy steel. The side entry sub is manufactured with box by pin connections to match the drill pipe by an integral 2" 1502 union side outlet.

**When ordering, please specify:**

- Overall length
- Sub OD
- Sub Bore
- Connection size





## Spacer Spool

The Spacer Spool is provided in every size and pressure rating. Spacer Spools normally have the same end connections; however, ROOT NINE INT'L can supply to customer specifications. Spacer Spools are manufactured to customer desired length or can be provided with minimum length to provide adequate working space. Spacer Spools are manufactured per API 6A specs from 4130 H2S 75K material.

**When ordering, please specify:**

- Size for Top
- Size for Bottom
- Length or height
- Studded or flanged ends
- Double Drilled
- Stainless steel ring grooves.



**Spacer Spool**



**Double Drilled Spacer Spool**





COMPLETE SOLUTIONS

ALBDR ALMASY ALALMYT LLC, MUSCAT TEL:24667680

## Stabbing Guide

Stabbing guides allow for faster and easier stabbing and add protection from damaging tubing casing and drill pipe during stabbing.

**When ordering, please specify:**

- Drill Pipe; Tubing or Casing Connection
- Tool Joint or Coupling OD size.



## Stabilizer

Stabilizer is manufactured from 4145M, 285-341 BHN steel. All API threads are in accordance with API spec 7-1. Numerous types of Hard facing can applied to fit your needs.

**When ordering, please specify:**

- String or Near Bit
- Integral or Welded blade
- Spiral or Straight Blade
- OD: Stabilizer OD and OD of fishing neck
- Tool lengths: OAL; Length of crown; Length of fishing necks
- Bore ID
- API connections (ex. 3-1/2" API IF, NC38)
- Bored for float valve (for near bit)
- Type of Hard facing



## Sucker Rod Elevator



**When ordering, please specify:**

- Sucker Rod OD

## TIW Safety Valves

The TIW Safety Valve can be used as a dill pipe safety valve or Lower Kelly Valve. The TIW safetyvalve can stop mud loss when the kelly is disconnected from the drill string. TIW (Kelly) Valves are manufactured from AISI 4140/4145 alloy steel and can be trimmed to standard or H2S. The TIW (kelly) Valves can be provided as one- or two-piece construction.

### **When ordering, please specify:**

- Upper or Lower
- Tool OD

Working Pressure: 5,000 / 10,000 / 15,000 PSI

- One piece or two piece construction
- Tool connection size (ex. EUE, CS, PH-6 or API)
- Standard or H2S Trim
- Bore
- Pressed or cast steel thread protectors

TIW type  
safety valve



## TS-100 Manual Spider (bowl) (100 ton)

The TS100 Manual Spider (bowl) comes in three ranges: 3-1/2" bowl; 4-1/2" bowl and 5-1/2" bowl and is used with slip assemblies.

Rated Capacity: 100 tons

3-1/2" Bowl Range: 3/4" – 3-1/2" 4-1/2"

Bowl Range: 1" – 4-1/2" 5-1/2" Bowl

Range: 2-3/8" – 5-1/2"

**When ordering, please specify:**

Bowl Size (3-1/2, 4-1/2, 5-1/2)

- Insert Size for Slip Assembly
- Extra Insert Sizes
- Spare parts





## Tubing Pup Joints

Pup Joints are short lengths of tubing and are used for spacing out downhole assemblies, as well as handling production tubing accessories. Pup joints can be ordered individually or in sets. Having sets on location gives the operator the flexibility of adjusting location depths of downhole assemblies, such as spacing out tubing hanger when landing productions seals. Pup joints can come with or without couplings.

### **When ordering, please specify:**

- Tubing OD
- Tubing ID, wall size or weight
- Grade: J-55, N-80 or P-110 or special grade
- Overall length; 2 ft., 4 ft., 6 ft., 8 ft., 10 ft. or specific customer sizes
- Standard or premium threads (ex. 2-3/8" EUE; 2-3/8" CS Hydril)
- Standard or Perforated
- Combination: box X pin; box X box; pin x pin
- Couplings



Tubing Pup Joints



Perforated Pup Joints

## Tubing Elevators TA Center Latch Elevators

TA Center Latch Elevators: Used for handling collar type tubing. Equipped with a latch and safety latch lock.

**When ordering, please specify:**

- OD of tubular (Pipe)
- Type of tubular (drill pipe; casing; tubing)
- Plain or upset
- Ton size needed (35; 65; 100 ton; etc.)
- 

ipe	Tubing (Upset/Non upset)			
Model	TA	TA	TA	TA
Max Load(Tons)	35	65	100	150
API Range	1.050	1.66	-	-
	1.315	1.9	2-3/8	2-3/8
	1.660	2-3/8	2-7/8	2-7/8
	1.900	2-7/8	3-1/2	3-1/2
	2-3/8	3-1/2	4	4
	2-7/8	4	4-1/2	4-1/2
	-	4-1/2	5	5



## Washpipe

Washpipe: The wash pipe is a relatively large internal-diameter tubular that can be washed over a fish in preparation for engaging and retrieving the fish.

**When ordering, please specify:**

- Washpipe OD
  - Washpipe ID, wall size or weight
- Grade: L-80, N-80 or P-110
- Range 2 or 3 or specific customer sizes
  - FJWP, premium threads or plain end.



## YC Slip Type Elevators

The YC (75) Ton Slip Type Elevator is used for holding and hoisting oilfield tubing. The YC size range is 3-1/2" through 7".

Rated Capacity: 75 tons Range: 3-1/2" – 7"

**When ordering, please specify:**

- What size inserts to be dressed with slip body
- Extra insert sizes
- Spare parts



## YT Slip Type Elevators

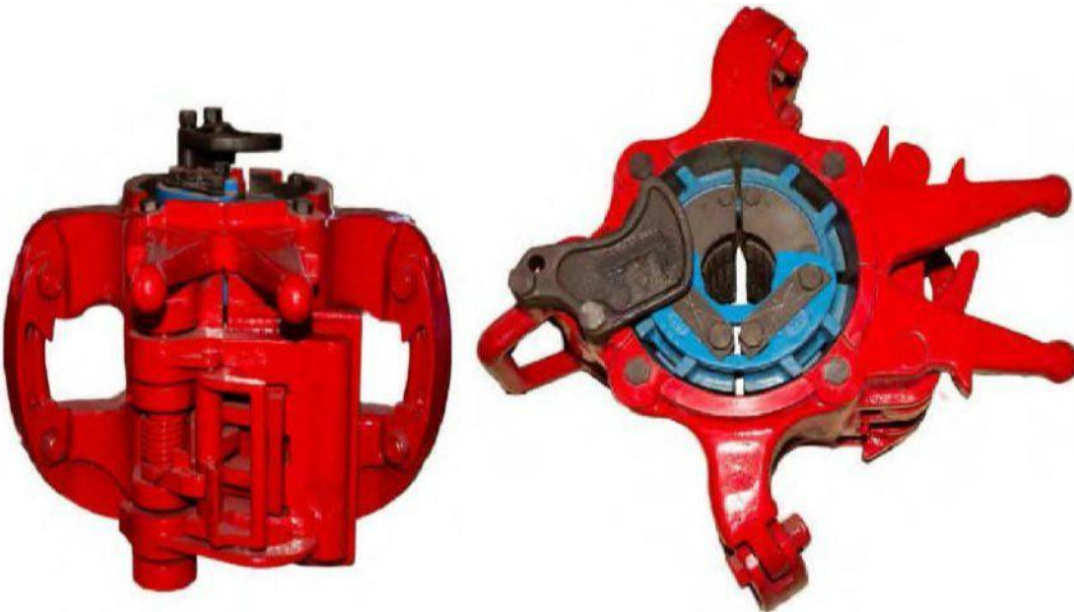
The YT (75) Ton Slip Type Elevator is used for holding and hoisting oilfield tubing. The YT elevator requires 2 different size slips in order to achieve the full range of pipe. The YT size range is 1" through 3-1/2".

Rated Capacity: 75 tons Range: 1"  
– 3-1/2"

2 slip bodies needed for full range

**When ordering, please specify:**

- What size inserts to be dressed with slip body
- Extra insert sizes
- Spare parts







COMPLETE SOLUTIONS

**ALBDR ALMASY ALALMYT LLC, MUSCAT TEL:24667680**

**SALES PROGRAMME**

SNO	BRIEF DETAIL OF PRODUCTS	ORIGIN
1	Carbon Steel Seamless Pipes 1/2" to 24" Schedule 12,20,40,80...	Ukraine,Italy&Other European
2	Carbon Steel & GI ERW Pipes 1/2"to 8"	Oman,India& KSA
3	Stainless Steel Seamless Pipes 1/2"to 12"	European & Indian
4	Stainless Steel ERW Pipes 1/2" to 6"	Taiwan
5	Carbon Steel Butt weld Fittings 1/2" to 24"	Taiwan & European
6	Carbon Steel Forged Fittings 1/2" to 3"	UK,Germany,India
7	Stainless Steel Butt-Welds Fittings 1/2" to 12"	China,India
8	Stainless Steel Forged Fittings 1/2" to 3"	France,India
9	Carbon Steel Flanges 1/2" to 24"	Italy,KSA&European
10	Stainless Steel Flanges 1/2" to 24"	India,Italy
11	Carbon Steel Valves -Gate,Globe,Check&Ball	Various Manufacturers
12	Brass Bronze Valves	Italy,Japan
13	Hand Tools(Gedore,Germany)	Various Manufacturers
14	Safety Items & Hardware	Various Manufacturers
15	Fastners-GI,MI,SS	Various Manufacturers
16	Non Asbestos,Spiral wound Gasket sheets	India,KSA,UK
17	Ductile Iron Grooved Fittings	India,China
18	Structural Sheet(MS)-Angles,Channels,Plates,Beams,Flat Bars,Round Bar,EN45	Various Manufacturers
19	Structural Steel(SS)-Angles,Channels,Plates,Flat Bars,Round Bars,Square Bars	Various Manufacturers
20	Fabrication of structures etc	GSEST



COMPLETE SOLUTIONS

**ALBDR ALMASY ALALMYT LLC, MUSCAT TEL:24667680**

## Tubing and Casing Patches

The API 5CT casing and tubing we provide are

OD: 2-3/8, 2-7/8, 3-1/2, 4-1/2, 5, 5-1/2, 6-5/8, 7, 8-5/8, 9-5/8, 10-3/4, 13-3/8, 20

inches Grade: J55, K55, L80, N80, C90, T95, P110, Q125



**Above items may be made available as follows:**

1. **Sale of new and unused tools:**
  - a. Directly from a ALBDR ALMASY ALALMYT LLC approved manufacturer with full traceability in accordance with API, NS1 or DS1 specifications as appropriate and in accordance with agreed terms and conditions equipment.
2. **Sale of Premium tools:**
  - a. Fully inspected by a ALBDR ALMASY ALALMYT LLC approved Inspection Authority in accordance with API, NS2 or DS1 specifications as required.

**Contact Us:**

**ALBDR ALMASY ALALMYT Oilfield Supply & Engineering LLC**

CR Number: 1281814, Regus Business Centre

2nd Floor Tamimah Building,

Al Nahda Road, Al Wattayah

PO Box 395 PC 118, Muscat, Sultanate of Oman

Email: [sales@albdar.com](mailto:sales@albdar.com)

Tel: +968-71771886 / 98126687 / 24667680

Website: [www.albdar.com](http://www.albdar.com)

*THE END*